

First Option™ Collection

www.interface.com

United States Headquarters

1503 Orchard Hill Road
LaGrange, GA 30240
1.800.336.0225 ext. 6511

Canadian Headquarters

233 Lahr Drive
Belleville, ON K8N 5S2
1.800.267.2149 ext. 2128

Latin American Headquarters

Rua Surubim, 577 - Conjuntos
73/74 7º Andar
04571-050 - São Paulo - SP
+ 55 11 2196 0900

CIM # IFS00641 11/2013



Mission Zero:
our promise to eliminate any
negative impact our company
may have on the environment
by the year 2020.

Interface®

First Option™ Collection

The perfect interior requires the perfect selection of stylish, high performance carpet. Thankfully, you have options. Whether you're working on a big project, meeting with new customers or gathering a team, the earthy tones of Interface's First Option collection make any space an inviting place to spend the day.

Meet™ is a finely textured pattern, adding just the right finish to smaller spaces such as private offices or small conference rooms. Work™ combines a soft range of hues in our nimble i2® construction, providing scale and flexibility to the more populated areas of the floor. And Gather™, with its energetic flashes of color, can define an open, casual meeting space or direct circulation across the floor.

The three products collaborate in a variety of settings – like corporate and medical offices, schools, retail spaces and multifamily housing. To add interest and character to your next carpet project, make your first option the First Option collection.

**PRODUCT MEET COLOR 180772 PUMICE PRODUCT GATHER
COLOR 180780 PUMICE ACCENT INSTALLED QUARTER-TURN**



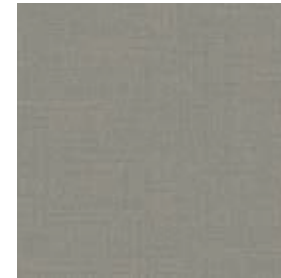








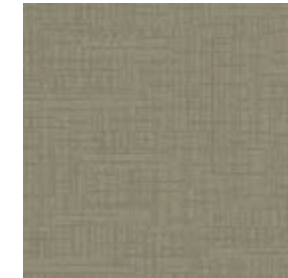
Meet™ Colorline



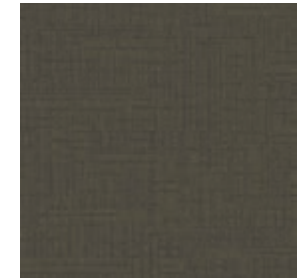
180770 FOG



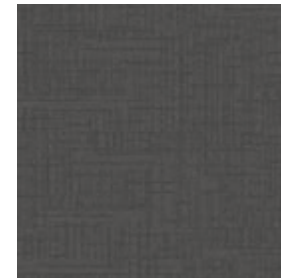
180771 WHEAT



180772 PUMICE



180773 OREGANO



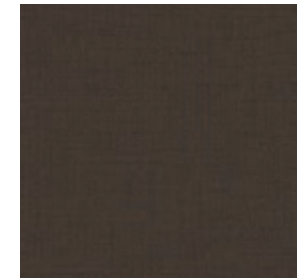
180774 GULL



180775 SLATE



180776 MARINE



180777 TOBACCO

Specifications

Modular, 50 cm x 50 cm	19DR302500
Backing System	GlasBac® Tile
Yarn Manufacturer	AquaFil
Yarn System	100% Recycled Content Type 6 Nylon
Color System	100% Solution Dyed
Construction	Tufted Textured Loop
Preservative Protection	Intersept®
Soil/Stain Protection	Protekt ² ®
Pile Thickness	0.099 in., 2.5 mm
Pile Density	5,091
Total Recycled Content	60%
Indoor Air Quality	CRI Green Label Plus #GLP0820



QUARTER-TURN



Work™ Colorline



180794 MIST



180795 SEAGRASS



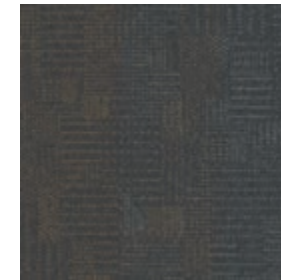
180796 CHESTNUT



180797 AUTUMN



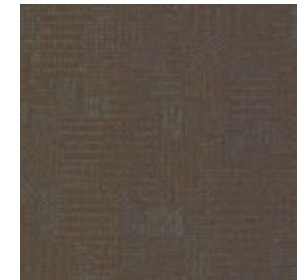
180798 CHARCOAL



180799 FLINT



180800 TIDAL



180801 MARSH

Specifications



Modular, 50 cm x 50 cm	19DR602500
Backing System	GlasBac® Tile
Yarn Manufacturer	Aquafil
Yarn System	100% Recycled Content Type 6 Nylon
Color System	100% Solution Dyed
Construction	Tufted Textured Loop
Preservative Protection	Intersept®
Soil/Stain Protection	Protekt ² ®
Pile Thickness	0.096 in., 2.4 mm
Pile Density	5,625
Total Recycled Content	61%
Indoor Air Quality	CRI Green Label Plus #GLP0820



NON-DIRECTIONAL



Gather™ Colorline



180778 FOG ACCENT



180779 WHEAT ACCENT



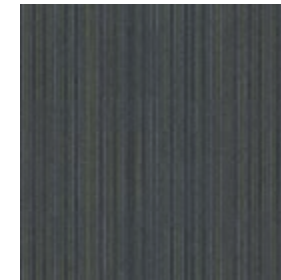
180780 PUMICE ACCENT



180781 OREGANO ACCENT



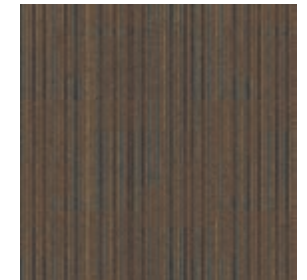
180782 GULL ACCENT



180783 SLATE ACCENT



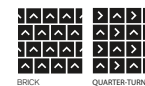
180784 MARINE ACCENT



180785 TOBACCO ACCENT

Specifications

Modular, 50 cm x 50 cm	19DR402500
Backing System	GlasBac® Tile
Yarn Manufacturer	AquaFil
Yarn System	100% Recycled Content Type 6 Nylon
Color System	100% Solution Dyed
Construction	Tufted Textured Loop
Preservative Protection	Intersept®
Soil/Stain Protection	Protekt ² ®
Pile Thickness	0.101 in., 2.6 mm
Pile Density	5,347
Total Recycled Content	61%
Indoor Air Quality	CRI Green Label Plus #GLP0820



Get It Fast

Get It Fast

When You Need It. Meet, Work and Gather are all available to ship up to 2,000 square yards within 10 business days. Backed by over 40 years of proven experience from the world's largest carpet tile manufacturer, our First Option program makes it easy to get the right carpet right when you need it.

Why Our Modular Carpet?

Modular Carpet

Performance and Flexibility. Interface's modular carpet tile sets the industry standard for performance. Tiles are designed to stay on the floor with no upcurl, tapping or rippling. Carpet tiles are easier to handle, install and maintain. They install with just 3-4% waste – and as little as 1.5% for i2® non directional styles like Work – compared to an average 14% for traditional roll carpet. And our i2 styles are mergeable so tiles from multiple dye lots will always blend, even when selectively replaced years later.

Selective Replacement

Easy Replacement. Tile replacement is a snap with Interface carpet tiles. Because tiles are replaced individually, there are no bulky carpet rolls, complicated cutting or messy glue to contend with. In fact, replacing individual tiles is so simple that in-house staff can handle it – no costly outside contractors necessary. Another bonus? No shuffling of heavy furniture or disrupting work during business hours.

Easy Maintenance

Worry Free Carpet. Looking for an easy, affordable way to shorten your maintenance to-do list? Interface is the solution. Our carpet tiles require only regular vacuuming, unlike other flooring types that demand mopping, buffing and polishing. Plus, tiles resist stains and hold spills on the surface where they can be easily cleaned.

Solution Dyed

Stain Resistant. With Interface, you don't have to stress over stains. Our carpet tiles feature premium, solution dyed nylon fibers that are designed to resist stains. Plus, tiles hold up to bleaches and other cleaning liquids that can ruin traditional carpet. That means fewer headaches and hassles for maintenance staffs – and a brighter, fresher environment for everyone.

15 Year Warranty

15 Year Warranty. Simply put, we stand behind all Interface products with a 15-year warranty. Our products are warranted against excessive surface wear, edge ravel, backing separation, shrinking, stretching and static electricity. First Option products also meet TARR rating for heavy duty commercial wear.

TacTiles®

Glue Free Installation. Get out of a sticky situation with TacTiles®, Interface's revolutionary glue-free installation system. These hardworking connectors eliminate the need for glue by adhering tiles to each other, not the floor below, creating a "floating" floor. The result? Less mess, no harsh glue fumes and greater productivity and savings.

Third Party Certification

cool carpet™

Cool Carpet – Our third party verified carbon offset program zeroes out all greenhouse gas (GHG) emissions associated with the entire lifecycle of your carpet.



Environmental Product Declaration (EPD) – A statement of product ingredients and environmental impacts over the entire life cycle of a product. A comprehensive life cycle assessment (LCA) is performed to ISO standards to develop an EPD, after which both the EPD and LCA must be third party verified.



Sustainable Assessment for Carpet – The only carpet sustainability standard in North America that evaluates the environmental impact of carpet for its entire lifecycle.



CRI Green Label Plus – An independent testing program that identifies carpet and adhesives with very low emissions of VOCs to help improve indoor air quality.

TacTiles®

Say goodbye to glue and hello to a faster, cleaner, easier installation with TacTiles.

Get out of a sticky situation with TacTiles®, Interface's revolutionary installation system. These handy little squares eliminate the need for glue by adhering carpet tiles to each other, not the floor below, making installation a breeze.

Here are a few other ways TacTiles create less mess, less waste and more savings:

- They have virtually no volatile organic compounds (VOCs) or harsh odors, so employees and customers won't be disrupted during installation or maintenance;
- They create a "floating floor" that means greater flexibility and easier replacement;
- They provide an environmental footprint more than 90% lower than traditional glues;
- They're much easier to work with – one roll of TacTiles installs the same amount of carpet as a 42-lb bucket of the sticky stuff.

And they work. TacTiles connectors have been used to successfully install Interface carpet tiles in offices, shopping malls, university campuses, K-12 classrooms, churches, libraries and more.



Printed on 50% post consumer waste (PCW) fiber manufactured using wind power.

We have tried our very best to accurately represent product colors. However, due to the nature of printed materials, color of actual products may vary slightly. Please request a sample to see actual product color.

All product specifications reflect averages derived from product sample testing, are subject to normal manufacturing and testing tolerances and inherent pattern variances, and may be changed without notice. For more information about these and other important attributes of the product(s) described herein, including recycled content and product warranty information, please see www.interface.com/disclaimer.

